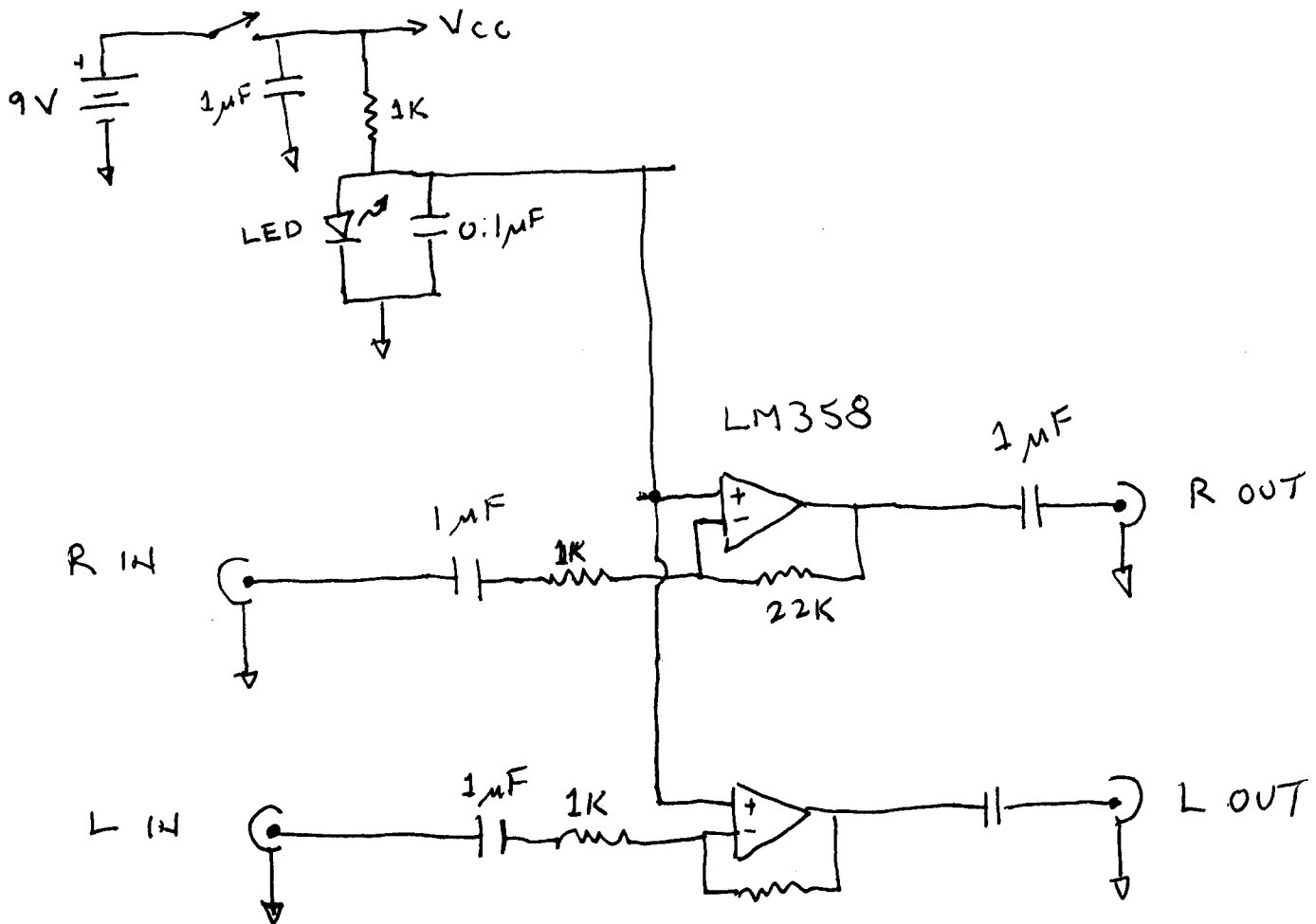


19 MAR 2014

Roderick.

STEREO COMPUTER HEADSET MIKE AMPLIFIER



WANTED VISIBLE INDICATION FROM LED - MIGHT AS WELL
USE TO SET OPERATING POINT. COULD BE POWERED FROM 5V -
LED WILL BE DIMMER.
INPUT CAPS ARE ESSENTIAL. OUTPUT CAPS MAY NOT
BE NEEDED, DEPENDING ON CONNECTION,
COULD ~~BE~~ ELIMINATE LED AND USE RESISTIVE DIVIDER
INSTEAD. USE HIGHER RESISTORS FOR MINIMUM POWER DISSIPATION
AMPLIFIER INVERTS.
ON-OFF SWITCH OPTIONAL.
DON'T USE A SWITCHING POWER SUPPLY - NEED QUIET SUPPLY.
ANY CAP COULD BE BIGGER.