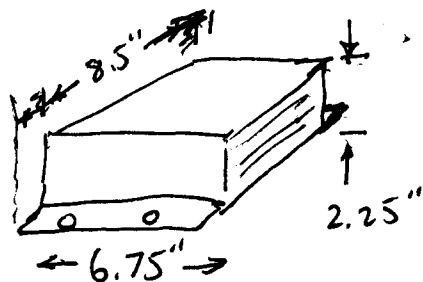


GOT CATV DISTRIBUTION AMP FROM ELECTRONIC FLEA MARKET FOR \$3.

DIMENSIONS



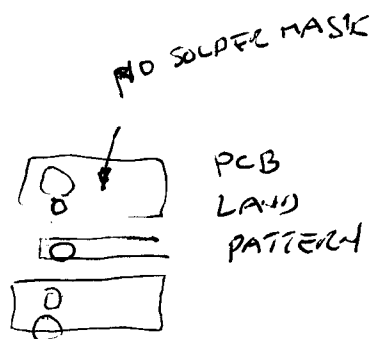
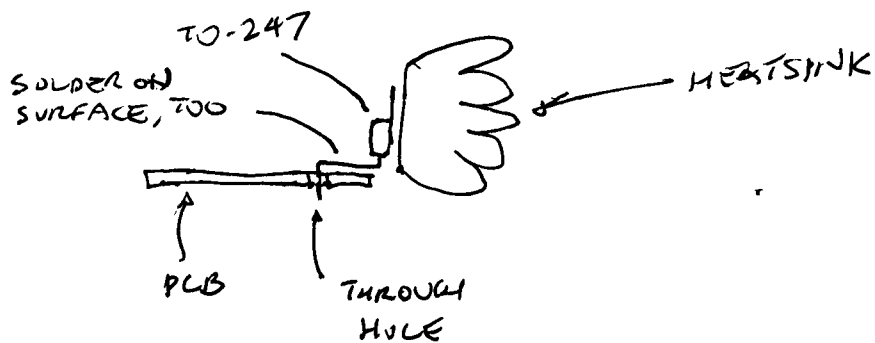
THINK I CAN CUT DOWN THE 6.75" DIMENSION. FRONT, BACK, TOP, BOTTOM ARE JUST ALUMINUM PANELS THAT COME OFF.

THE AMP APPEARS QUITE OLD. DATE CODE ON TRANSFORMER (LINEAR POWER SUPPLY) SAYS 9/83. LINEAR REGULATOR ISN'T EVEN A 3-TERMINAL DEVICE, IT'S A TIP122 WITH 145736A ZENERS. NO SURFACE MOUNT AT ALL.

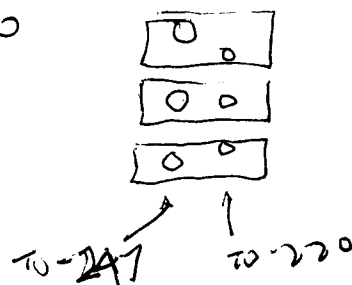
COULD USE A PLACE WITH A METAL SHEARS & DRILL PRESS. I WONDER IF JULIE INHERITED A SHEAR?

CLAY SHOWED ME COULD GET A METAL CUTTING BLADE FOR TABLE SAW. CHEAP, \$5. ABRASIVE DISC. HE SAYS IT CUTS WELL, ESPECIALLY SOFT METAL LIKE ALUMINUM.

HEAT SINK IS ON SIDE - CAN MOUNT TRANSISTORS RIGHT ON IT? EXISTING DESIGN HAD UNUSUAL RF AMP COMPONENTS.



WILL NEED TO SECURE MAIN TORROID, TOO



1826-0106 WHAT IS IT? CLEARLY HP 4x4
LOW NUMBER ON LAST 4 DIGITS SUGGEST
IT'S AN OLD PART, ALTHOUGH NOT SO
OLD THAT IT'S 1820-XXXX.

7805 VOLTAGE REGULATOR

EXPERIMENTS -

✓ RESTORE MONITORED SETUP

TRY LARGER INDUCTOR?

ARE THESE EXPERIMENTS BLOCKING MOUSE ORDER?
- YES, MIGHT WANT TRANSISTOR WITH LOWER Q_g

GET 4420 DRIVER → BREADBOARD → PCB LAYOUT

DIMENSIONS OF TO-247 - HOW LONG ARE LEADS?

WILL IT WORK W/ ~~EDGE~~ EDGE MOUNT

PREFER TO
SCREEN OR CLIP
ON ~~TOP~~
TO 247/
TO 220

